



- displacement <X>
- displacement <Z>
- temperature <1 K>
- displacement <Z>
- contact
- contact
- displacement <Z>
- contact
- thermal stress <0 K>
- force <1E+04 N>
- displacement <Z>
- displacement <X>
- Named Selections
  - Assembly <7075 elements>
  - Bearing\_ID <linked>
  - Bearing\_OD <linked>
  - Crank\_OD <linked>
  - Pin\_Bore <linked>
  - Pin\_OD <linked>
  - Rod\_Bore <linked>
  - Rod\_Bore(2) <linked>
- CCX
  - custom step contents
- Solution
  - Components
  - Table
  - Displacement Magnitude
  - Displacement in X
  - Displacement in Y
  - Displacement in Z
  - Stress XX
  - Stress YY
  - Stress ZZ
  - Stress XY
  - Stress YZ
  - Stress ZX
  - von Mises Stress
  - Principal Stress 1
  - Principal Stress 2
  - Principal Stress 3
  - TOSTRAIN\_EXX
  - TOSTRAIN\_EYY
  - TOSTRAIN\_EZZ
  - TOSTRAIN\_EXY
  - TOSTRAIN\_EYZ
  - TOSTRAIN\_EZX
  - FORC\_F1
  - FORC\_F2
  - FORC\_F3

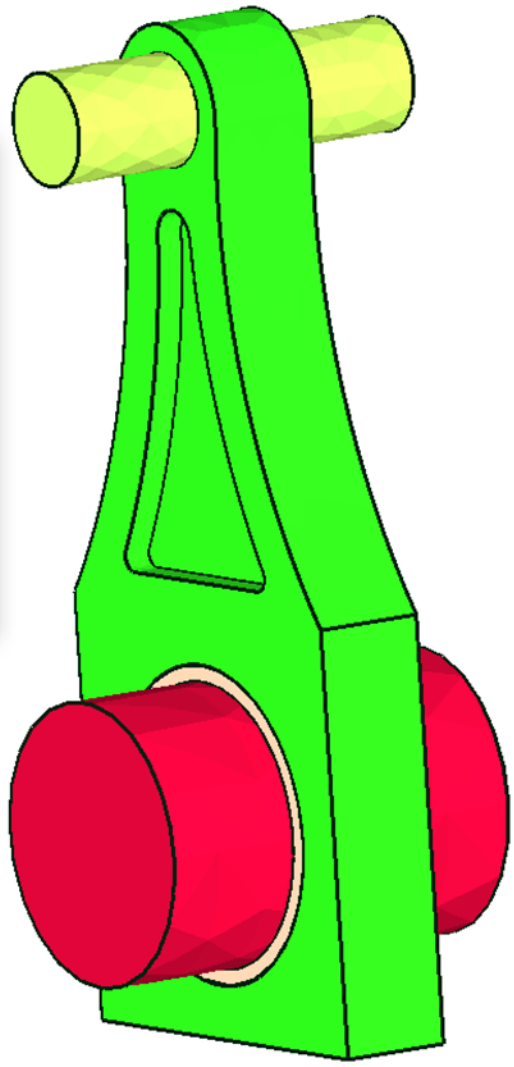
custom step contents

Text inserted at the end of the step section of the .inp file.

Use the m,kg,s,K unit system for all values defined here.

```
*CONTACT FILE CDIS, CSTR
```

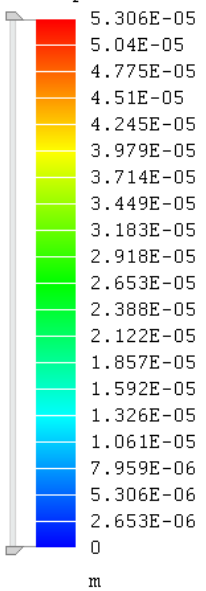
OK Cancel





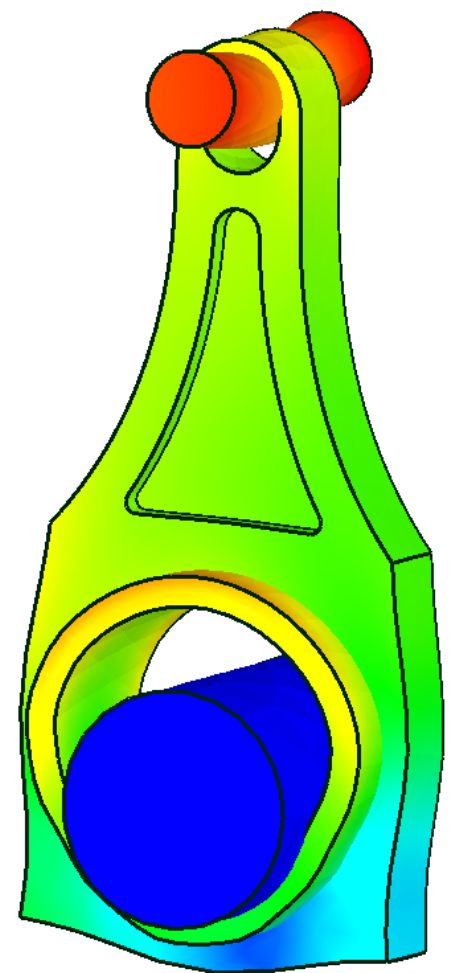
- contact
- thermal stress <0 K>
- force <1E+04 N>
- displacement <Z>
- displacement <X>
- Named Selections
  - Assembly <7075 elements>
  - Bearing\_ID <linked>
  - Bearing\_OD <linked>
  - Crank\_OD <linked>
  - Pin\_Bore <linked>
  - Pin\_OD <linked>
  - Rod\_Bore <linked>
  - Rod\_Bore(2) <linked>
- CCX
- custom step contents
- Solution
  - Components
  - Table
  - Displacement Magnitude
  - Displacement in X
  - Displacement in Y
  - Displacement in Z
  - Stress XX
  - Stress YY
  - Stress ZZ
  - Stress XY
  - Stress YZ
  - Stress ZX
  - von Mises Stress
  - Principal Stress 1
  - Principal Stress 2
  - Principal Stress 3
  - TOSTRAIN\_EXX
  - TOSTRAIN\_EYY
  - TOSTRAIN\_EZZ
  - TOSTRAIN\_EXY
  - TOSTRAIN\_EYZ
  - TOSTRAIN\_EZX
  - FORC\_F1
  - FORC\_F2
  - FORC\_F3

Displacement Magnitude



```
Rod_with_Bearing.copy.inp - Notepad
File Edit Format View Help

*NODE FILE,GLOBAL=YES
U,RF
*EL FILE
S,E
*CONTACT FILE CDIS, CSTR
*END STEP
```



Increment 100%  
Iteration 6  
Solver exited

Errors (0)

CCX output

Inp file

Cancel

Deformation scale factor 966.3